

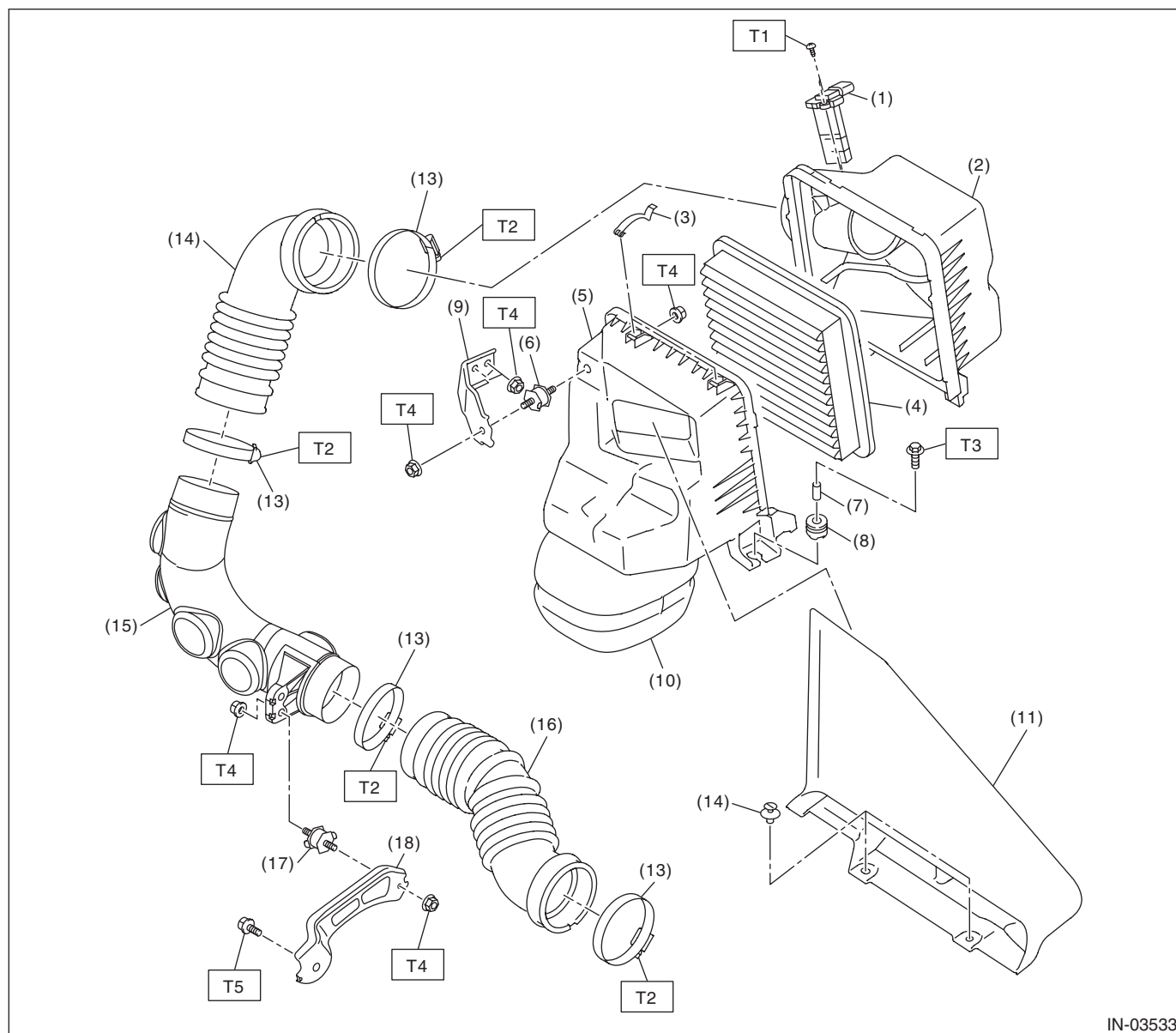
General Description

INTAKE (INDUCTION)

1. General Description

A: COMPONENT

1. AIR CLEANER



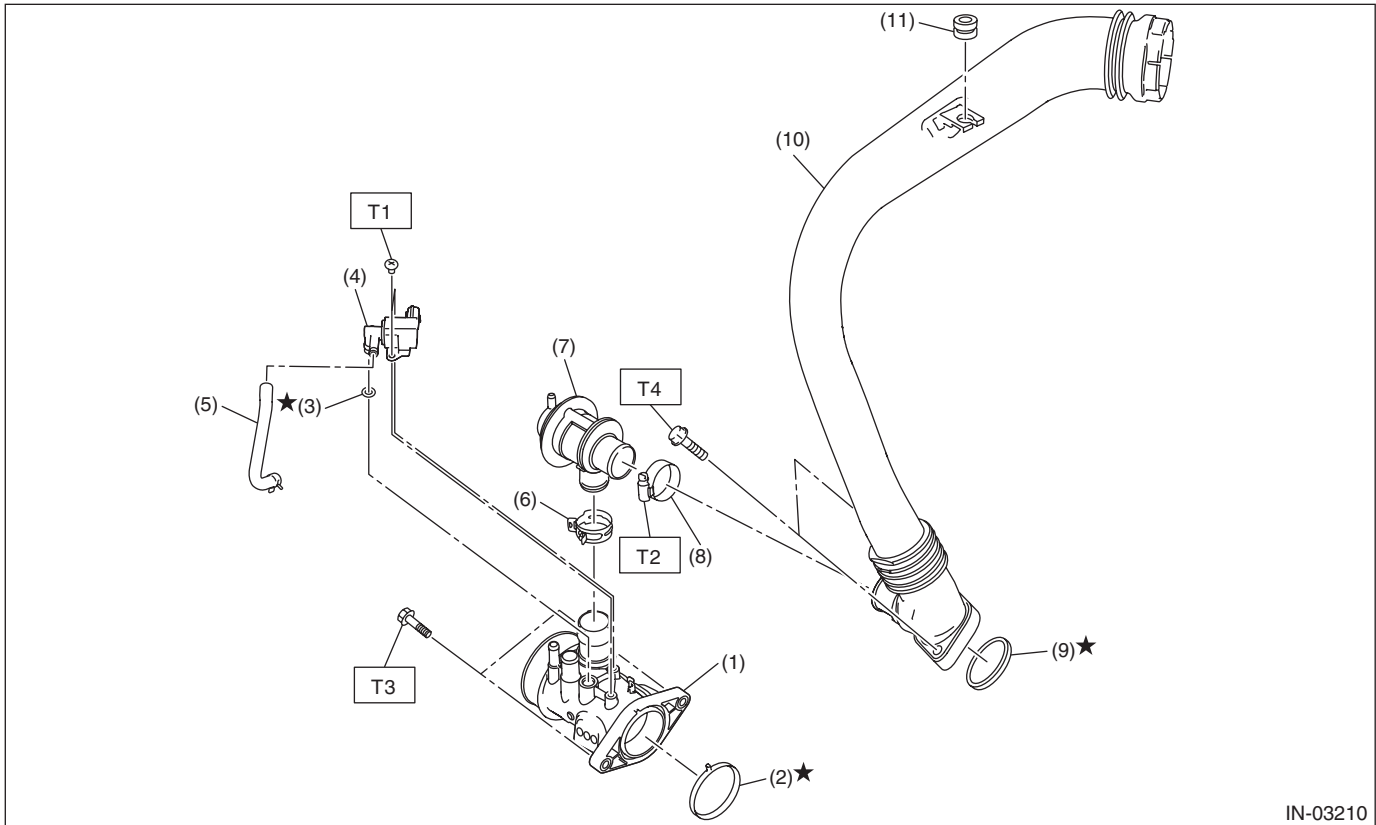
IN-03533

- | | |
|---|------------------------|
| (1) Mass air flow and intake air temperature sensor | (10) Resonator chamber |
| (2) Air cleaner case (rear) | (11) Air intake duct |
| (3) Clip | (12) Clip |
| (4) Air cleaner element | (13) Clamp |
| (5) Air cleaner case (front) | (14) Air intake boot A |
| (6) Cushion | (15) Turbo duct |
| (7) Spacer | (16) Air intake boot B |
| (8) Cushion | (17) Cushion |
| (9) Air cleaner case bracket | (18) Duct bracket |

Tightening torque: N·m (kgf·m, ft·lb)

T1: 1 (0.1, 0.7)
T2: 2.5 (0.3, 1.8)
T3: 6 (0.6, 4.4)
T4: 7.5 (0.8, 5.5)
T5: 18 (1.8, 13.3)

2. INTAKE DUCT



IN-03210

- | | |
|--------------------------------------|------------------------|
| (1) Intake duct No. 1 | (7) Air by-pass valve |
| (2) O-ring | (8) Clamp |
| (3) O-ring | (9) O-ring |
| (4) Wastegate control solenoid valve | (10) Intake duct No. 2 |
| (5) Vacuum control hose | (11) Cushion |
| (6) Clip | |

Tightening torque: N·m (kgf-m, ft-lb)

T1: 2.8 (0.3, 2.1)

T2: 3 (0.3, 2.2)

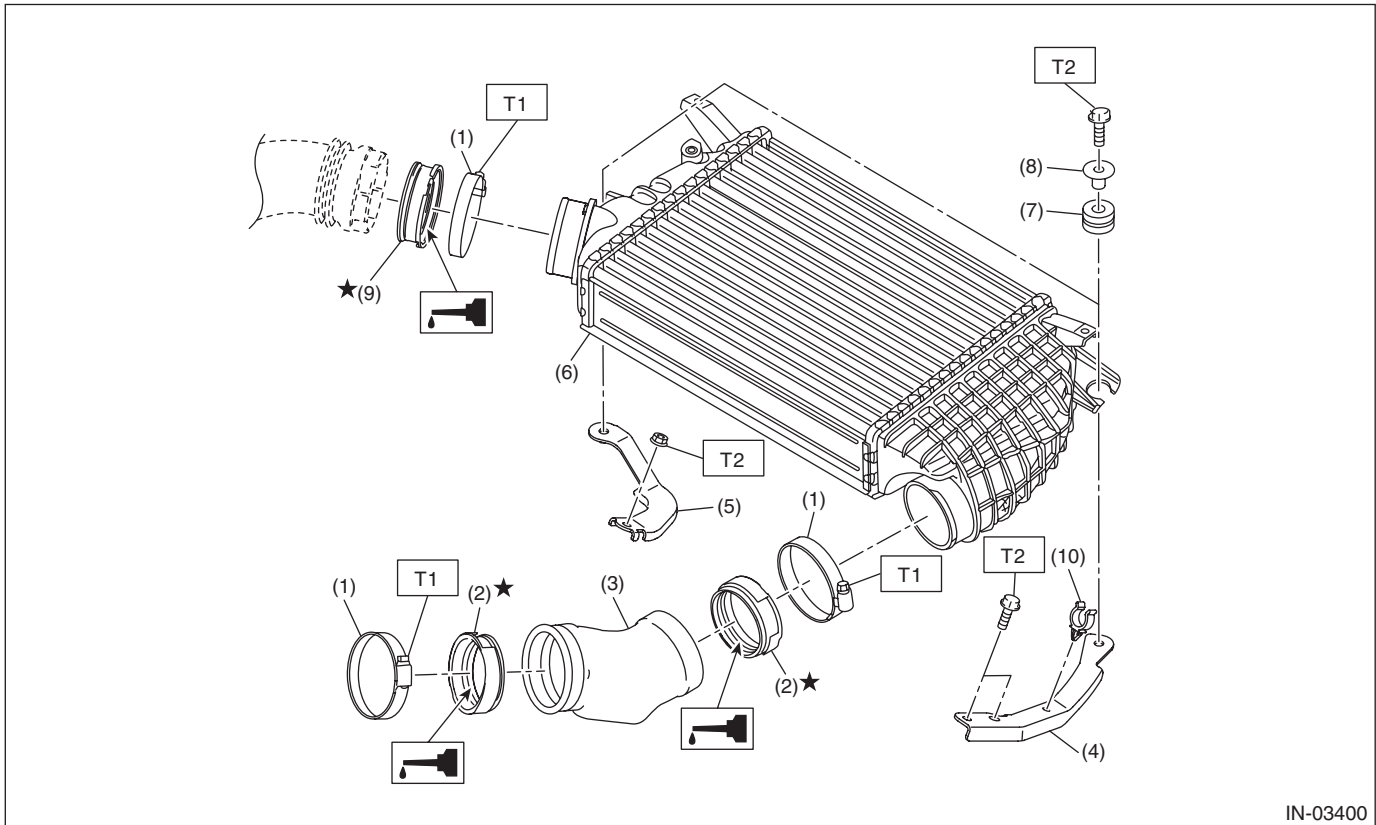
T3: 6.4 (0.7, 4.7)

T4: 16 (1.6, 11.8)

General Description

INTAKE (INDUCTION)

3. INTAKE DUCT AND INTERCOOLER



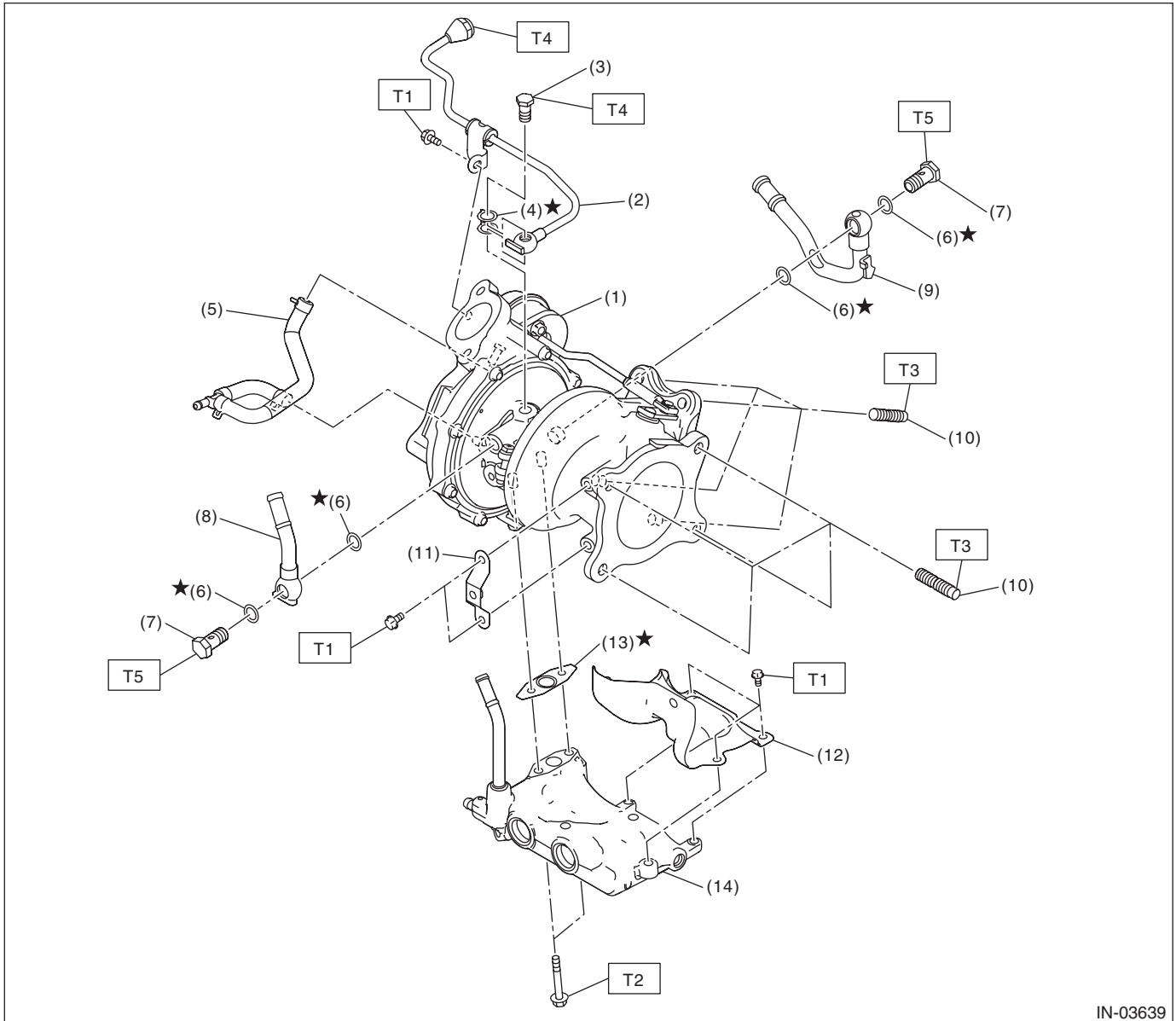
- | | |
|-------------------------|-----------------|
| (1) Clamp | (6) Intercooler |
| (2) Insulator | (7) Cushion |
| (3) Intake duct No. 3 | (8) Spacer |
| (4) Intercooler stay LH | (9) Insulator |
| (5) Intercooler stay RH | (10) Clip |

Tightening torque: N·m (kgf-m, ft-lb)

T1: 3 (0.3, 2.2)

T2: 16 (1.6, 11.8)

4. TURBOCHARGER



IN-03639

- | | |
|---------------------------|-------------------------|
| (1) Turbocharger | (8) Turbocharger pipe A |
| (2) Union screw pipe ASSY | (9) Turbocharger pipe B |
| (3) Union bolt | (10) Stud bolt |
| (4) Gasket | (11) Exhaust stay |
| (5) Air control hose ASSY | (12) Exhaust cover |
| (6) Gasket | (13) Gasket |
| (7) Union bolt | (14) Oil catch tank |

Tightening torque: N·m (kgf-m, ft-lb)

T1: 6.4 (0.7, 4.7)

T2: 10.5 (1.1, 7.7)

T3: 14.7 (1.5, 10.8)

T4: 16 (1.6, 11.8)

T5: 31.5 (3.2, 23.2)

General Description

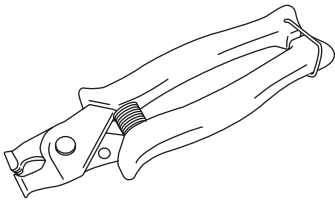
INTAKE (INDUCTION)

B: CAUTION

- Prior to starting work, pay special attention to the following:
 1. Always wear work clothes, a work cap, and protective shoes. Additionally, wear a helmet, protective goggles, etc. if necessary.
 2. Protect the vehicle using a seat cover, fender cover, etc.
 3. Prepare the service tools, clean cloth, containers to catch grease and oil, etc.
- Vehicle components are extremely hot immediately after driving. Be wary of receiving burns from heated parts.
- When performing a repair, identify the cause of trouble and avoid unnecessary removal, disassembly and replacement.
- Before disconnecting connectors of sensors or units, be sure to disconnect the ground cable from battery.
- Always use the jack-up point when the shop jacks or rigid racks are used to support the vehicle.
- Remove contamination including dirt and corrosion before removal, installation, disassembly or assembly.
- Keep the removed parts in order and protect them from dust and dirt.
- All removed parts, if to be reused, should be reinstalled in the original positions with attention to the correct directions, etc.
- Bolts, nuts and washers should be replaced with new parts as required.
- Be sure to tighten the fasteners including bolts and nuts to the specified torque.

C: PREPARATION TOOL

1. SPECIAL TOOL

| ILLUSTRATION | TOOL NUMBER | DESCRIPTION | REMARKS |
|--|-------------|--------------|--|
|  ST18353AA000 | 18353AA000 | CLAMP PLIERS | <ul style="list-style-type: none">• Used for removing and installing the PCV hose assembly.• This tool is made by the French company CAILLAU. (code) 54.0.000.205 To make it easier to obtain, it has been provided with a tool number. |

2. GENERAL TOOL

| TOOL NAME | REMARKS |
|---|--|
| TORX® socket E10 | Used for disassembling and assembling the turbocharger. |
| Mighty Vac | Used for checking waste gate actuator and air by-pass valve. |
| Urethane sheet Width × Height × Thickness Approx. 300 mm × approx. 200 mm × approx. 10 mm (Approx. 11.81 in × approx. 7.87 in × approx. 0.39 in) | Used for removing and installing intercooler. (MT model) |